

LOCKNUTS & WASHERS



Steel Unfinished • Brass Plated • Zinc Plated

HARDWARE & LAMP PARTS

Locknuts, Pal Nuts and Toothwashers



Steel Locknut - 1/8 IP
 9/16" hex., 1/8" thick
90-001 Unfinished
90-1036 Brass Plated
90-1037 Zinc Plated



Steel Locknut - 1/8 IP
 9/16" hex., 3/16" thick
90-034 Unfinished
90-033 Brass Plated
90-1035 Zinc Plated



Steel Locknut - 1/8 IP
 1/2" hex., 1/8" thick
90-187 Unfinished
90-1066 Brass Plated
90-1636 Zinc Plated



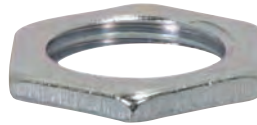
Steel Locknut - 1/8 IP
 1/2" hex., 3/16" thick
90-1648 Unfinished
90-1646 Brass Plated
90-1649 Zinc Plated



Steel Locknut - 1/4 IP
 1 1/16" hex., 1/8" thick
90-1038 Unfinished
90-591 Brass Plated
90-171 Zinc Plated



Steel Locknut - 1/4 IP
 3/4" hex., 1/4" thick
90-1702 Unfinished
90-1703 Brass Plated
90-1704 Zinc Plated



Steel Locknut - 3/8 IP
 7/8" dia., 1/8" thick
90-002 Zinc Plated



Steel Square Locknut - 3/8 IP
 1" dia., 1/8" thick
90-1424 Zinc Plated

Steel Locknuts



90-015
 6/32
 Zinc Plated



90-017
 8/32
 Zinc Plated



90-018
 1/4-20
 Zinc Plated



90-019
 Unfinished



90-594
 Brass Plated

Toothwashers 1/8 IP Slip



90-390
 Unfinished



90-392
 Brass Plated



90-592
 Zinc Plated

Toothwasher 8/32 Slip



90-1578
 Zinc Plated

Toothwashers 1/4 IP Slip



90-1579
 Unfinished



90-1580
 Brass Plated

Toothwasher 3/8 IP Slip



90-1698
 Zinc Plated

Brass Unfinished • Nickel Plated • Burnished & Lacquered

Brass Round Knurled Locknuts 9/16" Diameter 1/8 IP



90-003
Burnished & Lacquered



90-1042
Nickel Plated



90-1699
Unfinished

Brass Round Knurled Locknuts 3/4" Diameter 1/8 IP



90-004
Burnished & Lacquered



90-1577
Nickel Plated



90-1623
Unfinished

Brass Hexagon Locknuts 1/8 IP



90-172
1/2" Hex. 1/8" Thick
Unfinished



90-1385
1/2" Hex., 1/8" Thick
Nickel Plated



90-1700
1/2" Hex., 3/16" Thick
Unfinished

Brass Round Beaded Locknut 1/8 IP



90-1634
9/16" Dia., 5/32" Thick
Unfinished

Brass Round Plain Locknut 1/8 IP



90-1621
3/4" Dia. 1/8" Thick
Unfinished

Brass Battery Nut 8/32



90-016
Burnished & Lacquered

Brass Hexagon Locknut 1/4 IP



90-1701
11/16" Hex., 3/16" Thick
Unfinished

Brass Round Knurled Locknut 1/4 IP



90-014
3/4" Dia., 1/8" Thick
Burnished & Lacquered

Brass Round Knurled Locknut 1/8 IP



90-1601
1" Dia., 1/8" Thick
Unfinished

Steel Unfinished • Brass Plated • Nickel Plated

HARDWARE & LAMP PARTS

Curled Edge 1/8 IP Slip



Steel Check Ring
Curled Edge
1/8 IP Slip - Brass Plated

90-2049 1/2" 90-333 1 1/4"
 90-379 5/8" 90-2061 1 3/8"
 90-359 3/4" 90-364 1 1/2"
 90-360 7/8" 90-350 1 3/4"
 90-362 1" 90-351 2"
 90-363 1 1/8"



Steel Check Ring
Curled Edge
1/8 IP Slip - Nickel Plated

90-1661 1/2" 90-1710 1 1/8"
 90-2051 5/8" 90-1095 1 1/4"
 90-381 3/4" 90-1096 1 1/2"
 90-383 7/8" 90-1644 1 3/4"
 90-361 1" 90-1790 2"



Steel Check Ring
Curled Edge
1/8 IP Slip - Unfinished

90-2050 1/2" 90-2059 1 1/4"
 90-2052 5/8" 90-2062 1 3/8"
 90-2053 3/4" 90-2063 1 1/2"
 90-2055 7/8" 90-2074 1 3/4"
 90-2056 1" 90-2076 2"
 90-2058 1 1/8"



Beaded Steel
Check Ring
1/8 IP Slip

90-388 1 1/8" Brass Plated
 90-389 1 1/8" Nickel Plated



Steel Check Ring
Curled Edge
1/8 IP Slip - Vacuum Brass

90-176 1"
 90-177 1 1/4"



Steel Check Ring
Curled Edge
1/8 IP Slip - Antique Brass

90-1788 5/8" 90-1766 1"
 90-1765 3/4" 90-2182 1 1/4"
 90-1789 7/8" 90-1763 1 1/2"

Straight Edge 1/8 IP Slip



Steel Check Ring
Straight Edge
1/8 IP Slip - Brass Plated

90-353 1 1/4" 90-357 2"
 90-354 1 1/2" 90-1772 3"
 90-355 1 5/8" 90-1641 3 1/4"
 90-356 1 3/4"



Steel Check Ring
Straight Edge
1/8 IP Slip - Unfinished

90-2064 1 5/8" 90-1654 3"
 90-2066 1 7/8" 90-2072 3 1/4"
 90-2067 2" 90-2073 3 1/2"
 90-2068 2 1/8" 80-1204 3 3/4"
 90-2069 2 1/4" 80-1282 4"
 90-2070 2 1/2" 80-1205 4 1/4"
 90-1640 2 3/4"

Curled Edge 1/4 IP Slip



Steel Check Ring
Curled Edge
1/4 IP Slip - Brass Plated

90-358 3/4" 90-2075 1 3/4"
 90-472 1" 90-1656 2"
 90-473 1 1/4"
 90-2091 1 1/2"



Steel Check Ring
Curled Edge
1/4 IP Slip - Unfinished

90-2054 3/4" 90-2060 1 1/4"
 90-2057 1" 90-2090 1 1/2"
 90-1655 1 1/8" 90-2077 2"

Brass Unfinished • Nickel Plated • Burnished & Lacquered

Turned Brass Check Rings – Plated



Turned Brass Check Ring
1/8 IP Slip
Burnished and Lacquered

- | | |
|--------------|----------------|
| 90-2139 1/2" | 90-1091 1 1/4" |
| 90-2140 5/8" | 90-1092 1 1/2" |
| 90-2141 3/4" | 90-2146 1 3/4" |
| 90-2142 7/8" | 90-1094 2" |
| 90-1090 1" | |



Turned Brass Check Ring
1/8 IP Slip
Nickel Plated

- | |
|----------------|
| 90-1093 1" |
| 90-1088 1 1/4" |
| 90-1089 1 1/2" |



Turned Brass Check Ring
1/4 IP Slip
Burnished and Lacquered

- | |
|----------------|
| 90-2147 3/4" |
| 90-2148 7/8" |
| 90-2149 1" |
| 90-2150 1 1/2" |

Turned Brass Check Rings – Unfinished



Turned Brass Check Ring
1/8 IP Slip – Unfinished

- | | | |
|--------------|----------------|----------------|
| 90-1608 1/2" | 90-1602 1 1/8" | 90-1605 1 3/4" |
| 90-1594 5/8" | 90-1598 1 1/4" | 90-1606 1 7/8" |
| 90-1595 3/4" | 90-1603 1 3/8" | 90-1607 2" |
| 90-1596 7/8" | 90-1599 1 1/2" | |
| 90-1597 1" | 90-1604 1 5/8" | |



Turned Brass Check Ring
1/4 IP Slip – Unfinished

- | | | |
|--------------|----------------|----------------|
| 90-1609 5/8" | 90-1613 1 1/8" | 90-1617 1 5/8" |
| 90-1610 3/4" | 90-1614 1 1/4" | 90-1618 1 3/4" |
| 90-1611 7/8" | 90-1615 1 3/8" | 90-1619 1 7/8" |
| 90-1612 1" | 90-1616 1 1/2" | 90-1620 2" |

Turned Brass Double Check Ring

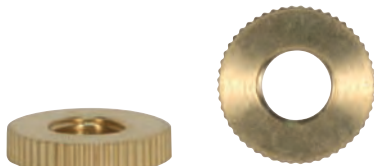


(Cross Section)

1/8 IP Slip
Burnished and Lacquered

- | |
|--------------|
| 90-2151 3/4" |
| 90-2152 1" |

Knurl Solid Brass Check Ring



(Side View)

1/8 IP Tapped

- | |
|----------------|
| 90-2438 3/4" |
| 90-2439 7/8" |
| 90-2440 1" |
| 90-2441 1 1/4" |

Solid Brass Square Check Ring



1/8 IP Slip

- | |
|-----------------------|
| 90-2318 3/4" Polished |
| 90-2319 1" Polished |